

ACCESSORIES



GOLDEN GAUGE

SIZE:

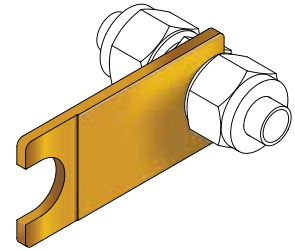
GAUGE	
PART NO.	AVAILABLE ONLY IN
3900098	1/4" (6mm), 3/8", 1/2" (12mm)



HIGH SAFETY

In applications where severe conditions and high pressure exist, we recommend the following installation procedures:

1. Check that the nut is finger tight.
 2. Insert the tube (up to the shoulder).
 3. Rotate the nut with a wrench until the tube does not rotate freely.
 4. Mark position of the nut.
 5. Rotate the nut 1-1/4 turns.
- This method ensures that even if the tube O.D. is at the minimum tolerance, the ferrules will be in contact with the tube for the full 1-1/4 rotation.



ADDITIONAL SIZES:

GOLDEN GAUGE	
PART NO.	LET-LOK® SIZE
3901508	Golden Gauge 1/16"
3901509	Golden Gauge 1/8"-2-3 mm
3901510	Golden Gauge 3/16"- 4 mm
3901513	Golden Gauge 5/16"- 8 mm
3901511	Golden Gauge 10 mm
3901247	Golden Gauge 5/8"-14-15-16 mm
3901246	Golden Gauge 3/4"-18 mm
3901512	Golden Gauge 7/8"-20-22 mm
3901245	Golden Gauge 1"-25 mm

Dimensions are for reference only, and are subject to change without notice.